

SAN BERNARDINO  
COUNTY

W AVENUE L

CITY OF  
CALIMESA

CALIMESA BLVD

El Casco  
Lake

70

CHERRY VALLEY BLV

BROOKSIDE AVE

SANTIMONTE CANYON RD

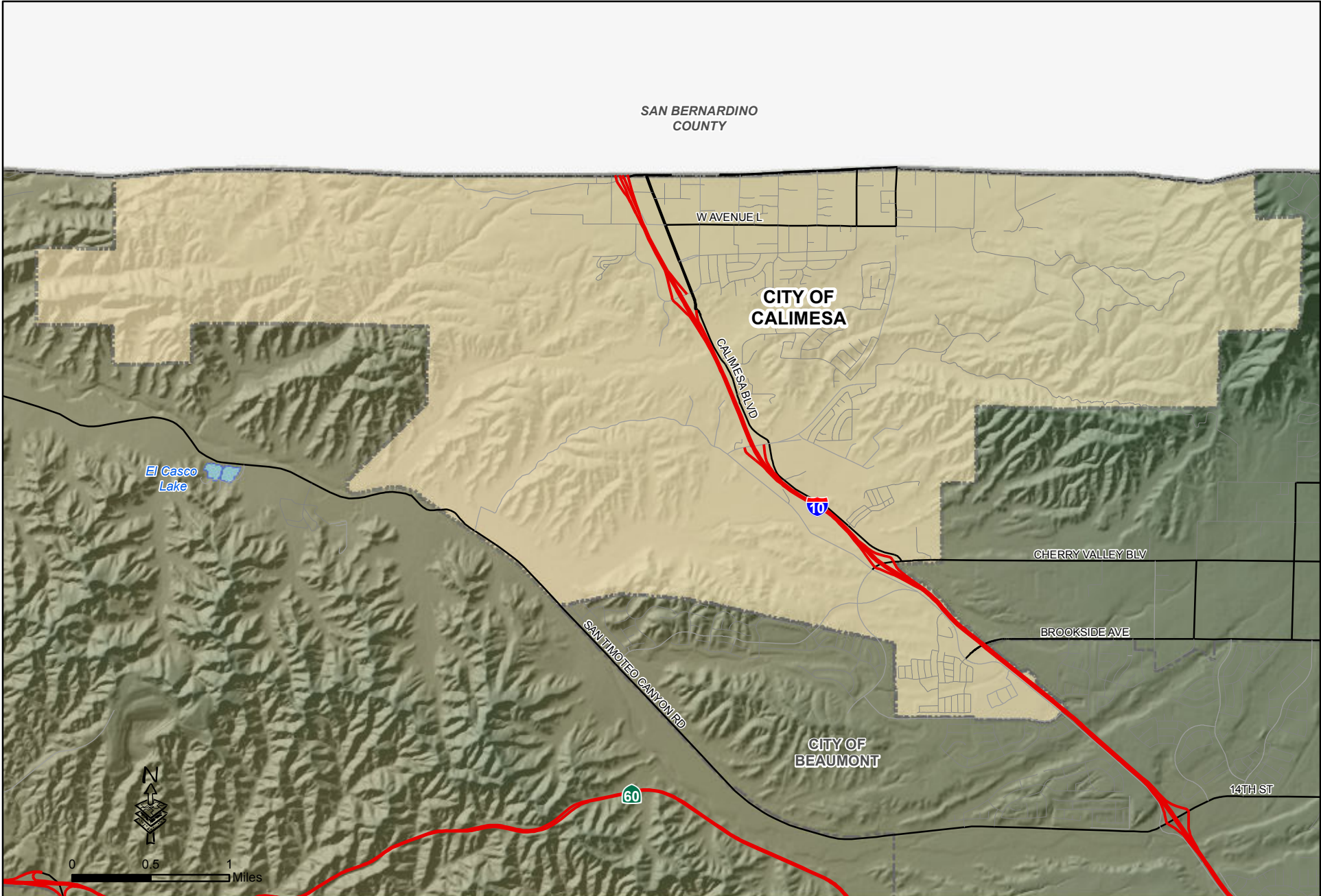
CITY OF  
BEAUMONT

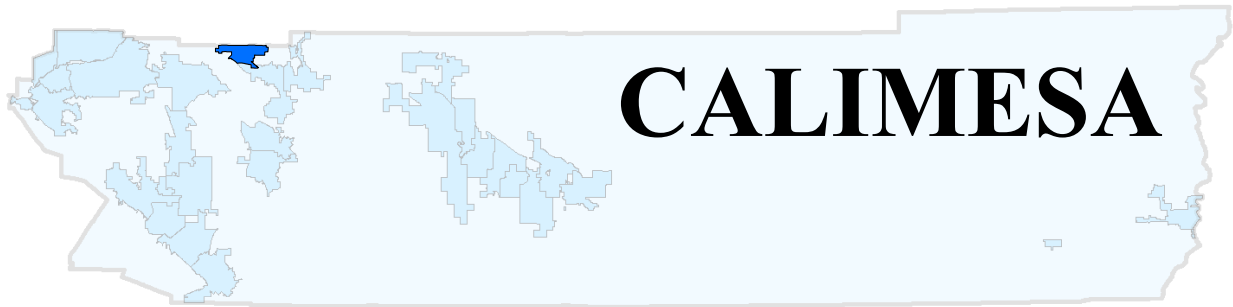
60

14TH ST



0 0.5 1 Miles





14.9 sq.miles

Incorporated in 1990

## POPULATION CHARACTERISTICS

<b>Population</b>	<b>2010 Racial &amp; Ethnic Population (*1)</b>	<b>2010 Population by Age (*1)</b>
1970 -	Number Percent	Number Percent
1980 -	White 5,730 72.7%	< 5 361 4.6%
1990 -	African American 75 1.0%	5-9 365 4.6%
1995 6,925 (*2)	Asian 93 1.2%	10-14 379 4.8%
1996 6,925 (*2)	Amer Indian/Alaska Native 67 0.9%	15-19 486 6.2%
1997 6,975 (*2)	Hawaiian and Pac Islander 10 0.1%	20-24 425 5.4%
1998 7,025 (*2)	Some Other Races 5 0.1%	25-34 775 9.9%
1999 7,075 (*2)	Two or More Races 137 1.7%	35-44 738 9.3%
2000 7,139 (*1)	Hispanic* 1,762 22.4%	45-54 1,191 15.1%
2001 7,244 (*2)	Total 7,879 100.0%	55-59 569 7.2%
2002 7,369 (*2)	* Hispanic can be of any race	
2003 7,505 (*2)	<b>Vital Statistics (*4)</b>	60-64 550 7.0%
2004 7,579 (*2)	Total Birth Total Death	65-74 989 12.6%
2005 7,601 (*2)	Year Births Rate* Death Rate*	75-84 742 9.4%
2006 7,608 (*2)	2007 96 12.6 133 17.4	85+ 309 3.9%
2007 7,605 (*2)	2008 66 8.5 118 15.2	Total 7,879 100.0%
2008 7,626 (*2)	2009 64 8.3 116 15.0	Median Age: 48.8
2009 7,747 (*2)	* Rates per 1,000 population	
2010 7,879 (*1)	<b>2011 Voter Registration (*5)</b>	% of County: 0.4%
2011 7,941 (*2)	Number Percent	
<b>Projections</b>	Democrat 1,252 30.3%	<b>2010 Population by Sex (*1)</b>
2020 14,858 (*3)	Republican 2,043 49.4%	Number Percent
2025 17,745 (*3)	Other 209 5.1%	Male 3,784 48.0%
2030 21,754 (*3)	No Party Preference 629 15.2%	Female 4,095 52.0%
2035 25,820 (*3)	Total Registered 4,133 100.0%	Total 7,879 100.0%

Sources: (\*1) Decennial Census, US Census Bureau

(\*2) January Estimate, CA State Dept. of Finance

(\*3) Riverside County Projections (RCP10)

(\*4) Riverside County Department of Public Health

(\*5) California Secretary of State, February 2011

Note: Totals might not add up due to rounding.

Comparing data between years may be problematic because of incorporations & annexations.

Projections are based on January 1, 2008 boundary; therefore current or future dwelling units in the annexed area may not be reflected in these projections.

# CALIMESA

## HOUSING & HOUSEHOLD CHARACTERISTICS

Housing Units			Housing Units by Type				
			2000 (*1)	Percent	2010 (*6)	Percent	
1970	-		Single Detached	1,761	54.2%	2,210	59.9%
1980	-		Single Attached	111	3.4%	96	2.6%
1990	-		Multi-Family: 2 to 4	57	1.8%	61	1.6%
			Multi-Family: 5 Plus	64	2.0%	0	0.0%
2000	3,248	(*1)	Mobile Homes	1,255	38.6%	1,320	35.8%
2001	3,262	(*2)	Total Units	3,248	100.0%	3,687	100.0%
2002	3,278	(*2)	Occupancy	2,982	91.8%	3,314	89.9%
2003	3,296	(*2)	Vacancy	266	8.2%	373	10.1%
2004	3,300	(*2)	<b>Median Home Price (*4)</b>				
2005	3,307	(*2)	2001	\$141,000			
2006	3,324	(*2)	2002	\$159,000			
2007	3,335	(*2)	2003	\$189,000			
2008	3,385	(*2)	2004	\$260,000			
2009	3,385	(*2)	2005	\$332,500			
2010	3,687	(*1)	2006	\$337,000			
2011	3,686	(*2)	2007	\$314,000			
			2008	\$237,500			
			2009	\$161,500			
			2010	\$160,000			
			2011*	\$141,750			
			*October 2011				
			<b>Persons Per Occupied Housing Unit (*1)</b>				
			2000	2.36			
			2010	2.36			
			<b>Housing Unit Building Permits (*5)</b>				
			Year	Single-Family Structure	All Multi-Family Structure	Total Units	
			1991	32	0	32	
			1992	20	0	20	
			1993	33	0	33	
			1994	16	0	16	
			1995	27	0	27	
			1996	15	0	15	
			1997	19	0	19	
			1998	15	0	15	
			1999	31	0	31	
			2000	15	0	15	
			2001	3	0	3	
			2002	20	0	20	
			2003	8	0	8	
			2004	9	0	9	
			2005	12	2	14	
			2006	15	0	15	
			2007	44	0	44	
			2008	0	0	0	
			2009	1	0	1	
			2010	0	0	0	
			<b>Projections</b>				
2020	6,804	(*3)					
2025	8,135	(*3)					
2030	9,984	(*3)					
2035	11,858	(*3)					

Sources: (\*1) Decennial Census, US Census Bureau

(\*2) January Estimate, CA State Dept. of Finance. DOF will further benchmark and adjust the data with 2010 Census.

(\*3) Riverside County Projections (RCP10)

(\*4) DataQuick Reports

(\*5) US Department of Housing & Urban Development, State of the Cities Data Systems

(\*6) 2005-2009 American Community Survey 5-Year Estimates and 2010 Decennial Census

Note: Totals might not add up due to rounding.

Comparing data between years may be problematic because of incorporations & annexations.

Projections are based on January 1, 2008 boundary; therefore current or future dwelling units in the annexed area may not be reflected in these projections.

# CALIMESA

## ECONOMIC AND LABOR FORCE CHARACTERISTICS

Labor Force Participation (*1)				
Year	Labor Force	Employed	Unemployed	Unemployment Rate
2006	4,100	3,900	200	3.8%
2007	4,200	4,000	200	4.5%
2008	4,200	3,900	300	6.4%
2009	4,200	3,700	400	10.3%
2010	4,100	3,700	500	11.3%
2011*	4,100	3,700	400	10.5%

\* Preliminary October 2011 data

Employment/Jobs Projections (*3)	
2020	2,774
2035	4,499

\* Jobs within city boundary

2009 Employment/Jobs by Industry Sector* (*2)	
Agriculture, Forestry, Fishing and Hunting	33
Mining, Quarrying, and Oil and Gas Extraction	1
Utilities	4
Construction	285
Manufacturing	222
Wholesale Trade	35
Retail Trade	121
Transportation and Warehousing	21
Information	23
Finance and Insurance	12
Real Estate and Rental and Leasing	17
Professional, Scientific, and Technical Services	52
Management of Companies and Enterprises	13
Administration & Support, Waste Mngt and Remediation	58
Educational Services	41
Health Care and Social Assistance	141
Arts, Entertainment, and Recreation	27
Accommodation and Food Services	160
Other Services (excluding Public Administration)	81
Public Administration	10
<b>Total All Jobs</b>	<b>1,357</b>

\*Jobs within city boundary

Median Household Income	
2000	\$ 37,849 (*4)
2009	\$ 50,893 (*5)

Taxable Sales in 1,000s of Dollars (*6)		
Year	Total	% of County
2003	\$34,896	0.2%
2004	\$40,742	0.2%
2005	\$44,642	0.2%
2006	\$50,575	0.2%
2007	\$51,047	0.2%
2008	\$54,285	0.2%
2009	\$53,092	0.2%

Sources: (\*1) CA Employment Development Department (City residents working anywhere. Data are not seasonally adjusted)

(\*2) U.S. Census Bureau Local Employment Dynamics

(\*3) Riverside County Projections (RCP10)

(\*4) Decennial Census, US Census Bureau (in 1999 inflation-adjusted dollars).

(\*5) 2005-2009 American Community Survey 5-Year Estimates (in 2009 inflation-adjusted dollars).

(\*6) State Board of Equalization

Note: Totals might not add up due to rounding.

Comparing data between years may be problematic because of incorporations & annexations.

Projections are based on January 1, 2008 boundary; therefore, current or future employment in the annexed area may not be reflected in these projections.